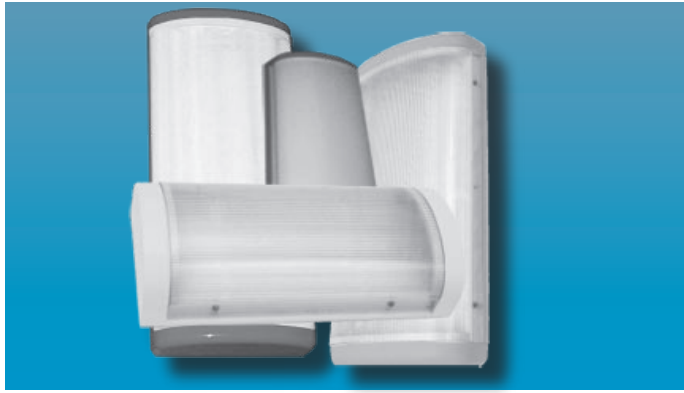


# VLP SCONCE SERIES

12" & 18" Horizontal or Vertical Sconce



# INSTITUTIONAL/BEHAVIORAL

## Specifier's Reference

<b>Project Name</b>	<b>Type</b>
<b>Catalog No.</b>	
<b>Comments</b>	

- **Listings/Certifications:** Wet location, ETL (US/Canada), NSF listed.

## Specifications

- **Housing:** Marine grade aluminum. Extruded backplate with architectural yet rugged die cast end caps. End caps available in round or square profiles. Conduit ready knockouts accessible from the inside of casting (not visible from the finish side).
- **Lens:** Positive interlocking, extruded polycarbonate lens with integral linear prisms. High impact polycarbonate material is lighting grade and UV stabilized.
- **Gasket:** Lens sealed to the housing ends with silicone sponge gasket. Wet location standard. IP55 gasketing available, see options.
- **Fasteners:** Stainless steel center pin reject allen-head standard. See fasteners list for alternatives.
- **Lamps:** See ordering information for various lamping options. Lamps are supplied by others.
- **Finish:** Housing and end caps are painted with a high quality semi-gloss Polyester Powder coat process. Textured white as standard with any RAL color available (see ordering information)
- **Ballasts:** Class P, Sound rated A magnetic ballasts as standard. See ordering options for lamp ballast combinations or for emergency ballast operation.
- **Mounting:** Ceiling, Wall or Corner mounted available. Additional hardware is needed for Corner installation (see ordering information).

## Ordering Information

Example: **VLPSC7 - R - 12" - 2 - 26Q - STD - F1 - WO - 120V**

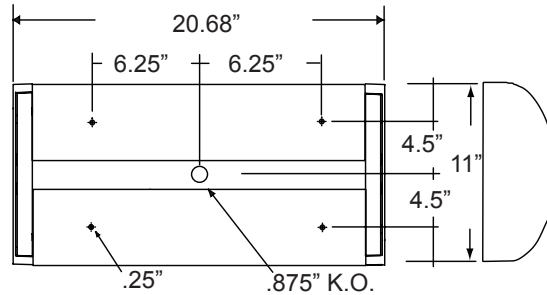
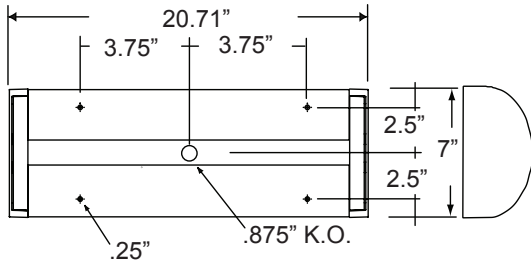
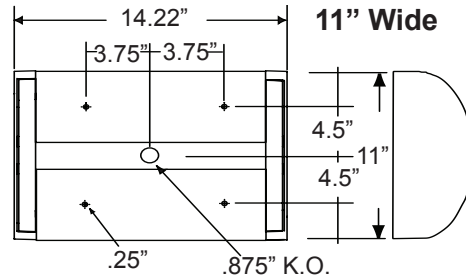
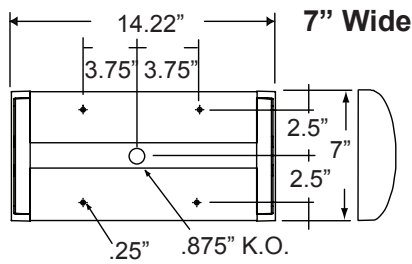
Series	Size	No. Lamps	Lamp Type	Ballast Type	Lens Type	Fasteners	Options	Voltage
<input type="text"/>	<input type="text"/>	<input type="text"/>	<input type="text"/>	<input type="text"/>	<input type="text"/>	<input type="text"/>	<input type="text"/>	<input type="text"/>
<b>-VLPSC7</b> 7" Width	<b>-S</b> Square Ends	<b>-12"</b>	<b>-1</b>	<b>-13</b> 13W Twin	<b>-STD</b> Standard Magnetic Ballast	<b>-F1</b> Allen Head, Center Pin Reject, standard	<b>-EMG1</b> 1-Lamp Emergency Power Pak 500 Lumen initial output, 90 minute, 32° start temp. (4' or 8' only)	<b>-120V</b>
<b>-VLPSC11</b> 11" Width	<b>-R</b> Round Ends	<b>-18"</b>	<b>-2</b>	<b>-13Q</b> 13W Quad	<b>-EBS</b> Specified Electronic Ballast	<b>-SF</b> Specified Fastener	<b>-EMG2</b> 2-Lamp Emergency Power Pak 1100 Lumen initial output, 90 minute, 32° start temp. (4' or 8' only)	<b>-277V</b>
				<b>-18Q</b> 18W Quad			<b>-FS</b> Fusing	<b>-347V</b>
				<b>-26Q</b> 26W Quad			<b>-WO</b> White Opal Polycarbonate Lens	
				<b>-32T</b> 32W TRT			<b>-Ag</b> AgION™ Antimicrobial Protection on Painted Surfaces	
				<b>-42T</b> 42W TRT			<b>-PM</b> Pendant Mount (Damp location only)	
							<b>-CMA</b> Corner Mount Adapter (Damp location only)	
							<b>-SP</b> Special Color. Provide RAL color & number. Consult factory for custom colors.	

Note: Contact Factory For Additional Configurations.

**VLP SCONCE SERIES**  
12" & 18" Horizontal or Vertical Sconce



**Dimensions & Mounting**



**Photometry**

**Zonal Lumen Summary**

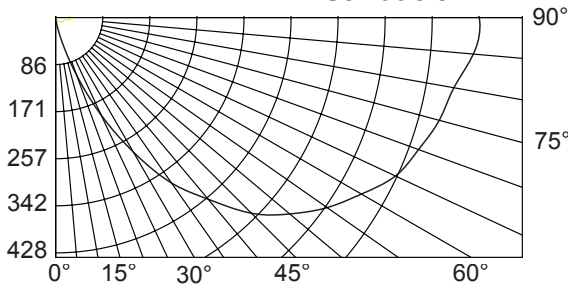
Zone	Lumens	% Lamp	% Luminaire
0-30	37	1.0	1.3
0-40	118	3.3	4.1
0-60	480	13.3	16.8
0-90	1429	39.7	50.0
90-120	949	26.4	33.2
90-130	1165	32.4	40.7
90-150	1393	38.7	48.7
90-180	1431	39.7	50.0
0-180	2860	79.5	100.0

Lumin. Spacing Maint.  
Effi. Cross Factor  
79.5% 11.23 85%

**Zonal Cavity Coefficient of Utilization**

I.T.L. Test No. ITL 37544, Product Catalog Number:  
VLPSC7-R-12-2-26Q-STD-F1-WO-120V  
Lamps: Two 26W Quad, each rated 1800

**Candlepower Distribution**



Floor Ceilings Walls(%)	80%			70%			50%				
	70	50	30	10	70	50	30	10	50	30	10
0	84	84	84	84	78	78	78	78	66	66	66
1	72	66	61	57	66	61	56	52	50	46	43
2	63	55	48	42	57	50	44	39	41	36	32
3	57	47	39	33	51	42	35	30	34	29	24
4	51	40	32	26	46	36	29	24	29	24	19
5	46	35	27	21	42	32	25	19	26	20	16
6	42	31	23	18	38	28	21	16	23	17	13
7	39	27	20	15	35	25	18	14	20	15	11
8	36	25	18	13	32	22	16	12	18	13	09
9	33	22	15	11	30	20	14	10	16	11	08
10	31	20	14	09	28	18	12	09	15	10	07

**Options**

Square end caps of die-cast aluminum.



Round die-cast aluminum end caps.

**Warranty:**

Morlite Vandal-resistant products are designed and manufactured to stand up to high physical abuse. When applied and installed according to our instruction, Morlite will warrant and repair or replace any product left inoperable due to physical punishment for the product life of the installation. See published warranty for additional details.

