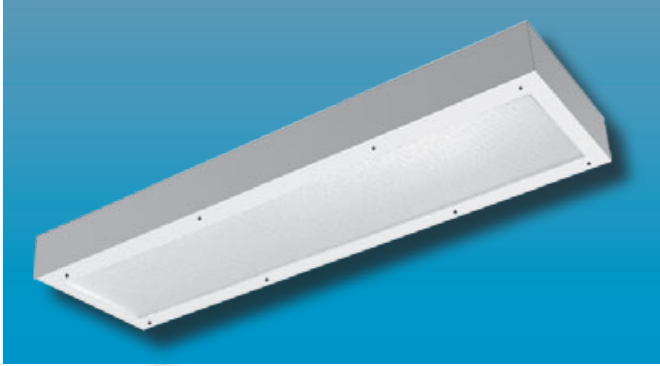


**SMAX-SDPH15 SERIES**  
 SUPER MAXIMUM SECURITY 15" WIDE  
 SURFACE MOUNTED TROFFER

**SUPER MAXIMUM SECURITY**



Specifier's Reference	
Project Name	Type
Catalog No.	
Comments	

- **Listings/Certifications:** ETL (US/Canada) listing

**Specifications**

- **Housing:** 12 gauge, one-piece die-formed welded housing. Optional stainless steel housing available.
- **Door:** 12 gauge one-piece die-formed cold rolled steel Available in brushed stainless steel as option.
- **Lens:** Standard .125" thick clear prismatic acrylic with clear polycarbonate overlay. Optional lensing shown below.
- **Lens Retention:** Vertically adjustable "Z" shaped retaining angles secured with through studs and die-cast locknuts.
- **Hinge:** 14 gauge 1/4" diameter knuckle, continuous piano hinge with welded pin ends. Hinge welded to housing and door.
- **Fasteners:** Fully recessed, captive, center pin reject Allen head standard.
- **Lamps:** See below for lamping options. Lamps supplied by others.
- **Ballasts:** Standard Class P, sound rated A electronic ballasts. Other ballast options available.
- **Finish:** Standard baked white polyester powder coat paint finish. Optional AgION™ antimicrobial finish available.
- **Mounting:** Standard 5/16" diameter mounting holes (4) for surface mounting. Hardware and support above plenum by others.

**Ordering Information**

Example: **SMAX - SDPH15 - 4 - 6 - T5 - EB10IS - 5/A - SS - UNV**

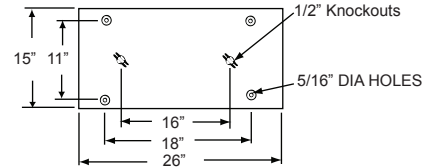
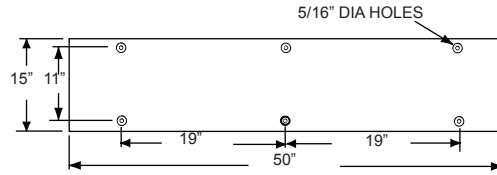
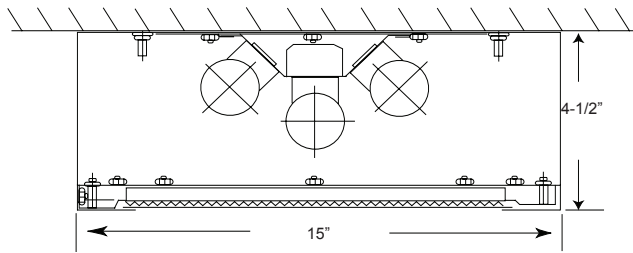
Series	Length	No. Lamps	Lamp Type	Ballast Type	Lens Type	Fasteners	Options	Voltage
<b>SMAX-SDPH15</b>								
	<b>-4</b> Nominal 4' Unit	<b>-4</b> Four Lamps	<b>-BX</b> 2' 40W <b>-T8</b> 4' 32W 2' 17W <b>-T5</b> 4' 28W 2' 14W <b>-T5HO</b> 4' 54W 2' 24W	<b>-EB10IS</b> Electronic Ballast <10% THD Instant Start <b>-SB</b> Specified Ballast	<b>ENVIRONMENT SIDE</b> <b>-5</b> .50" Clear Polycarbonate (standard) <b>-9</b> .50" Clear Tempered Glass <b>LAMP SIDE</b> <b>-A</b> .125 Prismatic Polycarbonate <b>-E</b> .125 Prismatic Polycarbonate <b>-G</b> .156 Prismatic Tempered Glass <b>-UV</b> .007 UV Absorbing Overlay	<b>-F1</b> Allen Head - center pin reject, standard <b>-SF</b> Specified Fastener	<b>-EMG1</b> 1-Lamp Emer- gency Power Pak 500 Lumen initial output, 90 minute, 32° start temp. <b>-EMG2</b> 2-Lamp Emer- gency Power Pak 1100 Lumen initial output, 90 minute, 32° start temp. <b>-SS</b> Stainless Steel Housing, Brushed Stainless Steel Door <b>-AG</b> AgION™ Antimi- crobial Protection in Powder Coat Paint <b>-PL7</b> 7W PL Nightlight <b>-GLR</b> GLR/HLR Fuse & Holder set	<b>-UNV</b> <b>-347V</b>

Note: Contact Factory For Additional Configurations.

**SMAX-SDPH15 SERIES**  
 SUPER MAXIMUM SECURITY 15" WIDE  
 SURFACE MOUNTED TROFFER



**Dimensions & Mounting**



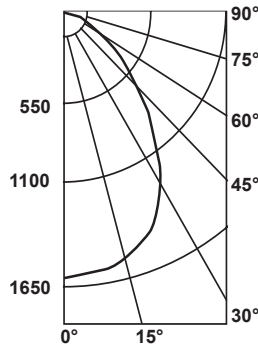
**Photometry**

**Candlepower Distribution**

**Zonal Cavity Coefficient of Utilization**

I.T.L. Test No. ITL 37569, Product Catalog Number:  
 SMAX-SDPH15-4-F-4-T8-EB10IS-4/A-SSD-F1-UNV  
 Lamps: Four 32WT8, each rated 3150

Floor Ceilings Walls(%)	80%				20% 70%				50%			
	70	50	30	10	70	50	30	10	50	30	10	
0	68	68	68	68	67	67	67	67	64	64	64	
1	64	62	60	58	62	60	59	57	58	57	55	
2	59	55	52	50	58	54	51	49	52	50	48	
3	55	50	46	43	54	49	45	43	47	44	42	
4	51	45	41	37	50	44	40	37	43	39	37	
5	47	40	36	32	46	40	35	32	39	35	32	
6	43	37	32	29	42	36	32	29	35	31	28	
7	40	33	28	25	29	33	28	25	32	28	25	
8	37	30	25	22	36	29	25	22	29	25	22	
9	34	27	22	19	33	26	22	19	26	22	19	
10	32	24	20	17	31	24	20	17	23	20	17	



**Average Luminance in Footlamberts**

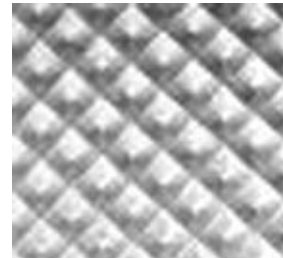
Vertical Angles	Average Brightness	
	Norm	Para
45°	1287	1207
55°	955	930
65°	611	639
75°	431	454
85°	201	201

Lumin. Effi.	Spacing Cross	Maint. Factor
57.4%	1.3	85%

**Options**

**Antimicrobial:** Agion™ Antimicrobial protection using silver technology inhibits bacterial colonization on metal interior and exterior surfaces. Agion™ antimicrobial FDA recognized and EPA registered, meeting all applicable EPA standards.



.125 Prismatic Acrylic Lens Standard