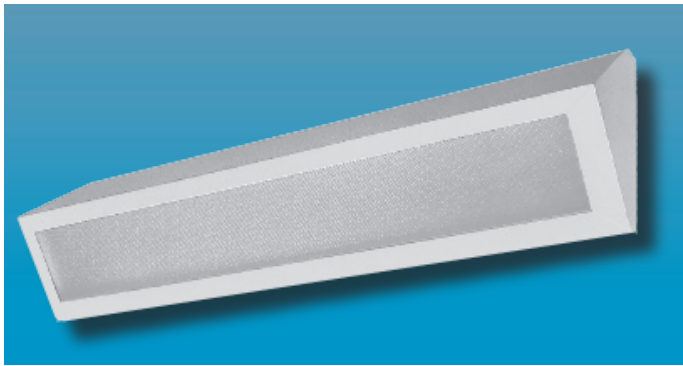


**MED-WSTHH SERIES**  
MEDIUM SECURITY WALL MOUNTED



**MEDIUM SECURITY**

Specifier's Reference	
Project Name	Type
Catalog No.	
Comments	

- **Listings/Certifications:** ETL (US/Canada), damp location listed.

**Specifications**

- **Housing:** 16 gauge, one-piece die-formed cold rolled steel, clamshell design with continuous welded seams. Optional stainless steel housing available.
- **Hinge:** Concealed, formed stainless steel piano hinge with welded pin ends. Hinge welded to one-piece housing and bolted to back plate.
- **Lens:** Standard .125" thick clear prismatic acrylic with clear polycarbonate overlay. Optional lensing shown below.
- **Lens Retention:** Vertically adjustable "Z" shaped retaining angles secured with through studs and die-cast locknuts.
- **Backplate:** One-piece, die-formed prime cold rolled steel, formed to provide an irretrievable contraband trap.
- **Fasteners:** Fully recessed, captive, center pin reject Allen head standard.
- **Lamps:** See below for lamping options. Lamps supplied by others.
- **Ballasts:** Standard Class P, sound rated A electronic ballasts. Other ballast options available.
- **Finish:** Standard baked white polyester powder coat paint finish. Optional AgION™ antimicrobial finish available.
- **Installation:** Embossed mounting holes in back plate to provide direct contact with mounting surface.

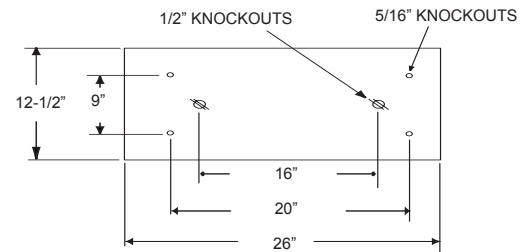
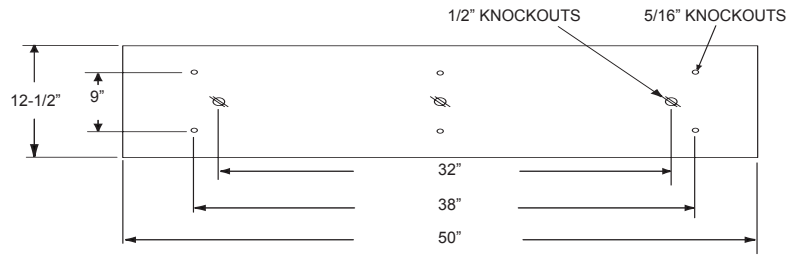
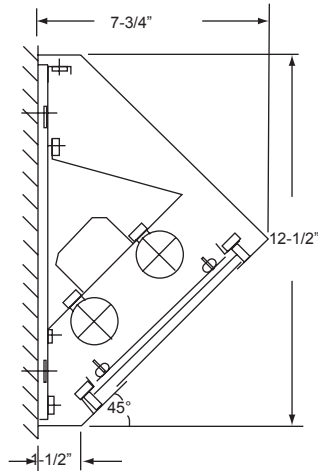
**Ordering Information**

Example: **MED - WSTHH - 4 - 3 - T5 - EB10IS - 7/A - SS - UNV**

Series	Size	No. Lamps	Lamp Type	Ballast Type	Lens Type	Fasteners	Options	Voltage
<b>MED-WSTHH</b>								
	<b>-2</b> Nominal 2' Unit	<b>-3</b> Three Lamps (4' only)	<b>-BX</b> 40W Biax (2' Unit Only)	<b>-EB10IS</b> Electronic Ballast <10% THD Instant Start	<b>ENVIRONMENT</b> <b>SIDE</b> <b>-3</b> .250" Clear Poly- carbonate (stan- dard)	<b>-F1</b> Allen Head - center pin reject, standard	<b>-EMG1</b> 1-Lamp Emergency Power Pak 500 Lumen initial output, 90 minute, 32° start temp.	<b>-UNV</b> <b>-347V</b>
	<b>-4</b> Nominal 4' Unit	<b>-2</b> Two Lamps	<b>-T8</b> 4' 32W	<b>-SB</b> Specified Ballast	<b>-7</b> .250" Clear Tempered Glass	<b>-SF</b> Specified Fastener	<b>-EMG2</b> 2-Lamp Emergency Power Pak 1100 Lumen initial output, 90 minute, 32° start temp.	
		<b>-1</b> One Lamp	<b>-T5</b> 4' 28W 2' 14W		<b>LAMP SIDE</b>			
			<b>-T5HO</b> 4' 54W 2' 24W		<b>-A</b> .125 Prismatic Polycarbonate		<b>-SS</b> Stainless Steel Housing, Brushed Stainless Steel Door	
					<b>-C</b> .140 DR Prismatic Acrylic		<b>-AG</b> AgION™ Antimicrobial Protection in Powder Coat Paint	
					<b>-G</b> .125 Smooth White Polycarbonate		<b>-PL7</b> 7W PL Nightlight	
					<b>-UV</b> .007 UV Absorbing Overlay		<b>-LEDNL</b> LED Nightlight	
							<b>-GLR</b> GLR/HLR Fuse & Holder set	

**Note: Contact Factory For Additional Configurations.**

**Dimensions & Mounting**



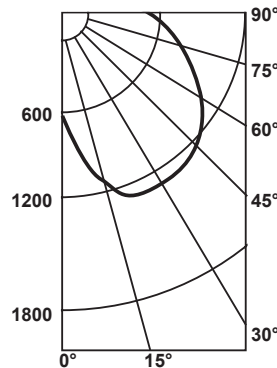
**Photometry**

**Zonal Cavity Coefficient of Utilization**

I.T.L. Test No. ITL 37585, Product Catalog Number:  
MED-WSTHH-4-3-T5-EB10IS-7/A-SS-UNV  
Lamps: Three 28WT5, each rated 3150

Floor Ceilings Walls(%)	80%			20% 70%			50%				
	70	50	30	10	70	50	30	10	50	30	10
0	53	53	53	53	51	51	51	51	48	48	48
1	47	44	42	40	45	43	41	39	40	39	37
2	42	38	34	31	41	37	33	31	35	32	29
3	38	33	29	26	37	32	28	25	30	27	24
4	35	29	25	21	33	28	24	21	26	23	20
5	32	25	21	18	30	25	20	17	23	20	17
6	29	22	18	15	28	22	18	15	21	17	14
7	27	20	16	13	26	20	16	13	19	15	12
8	24	18	14	11	24	18	14	11	17	13	11
9	23	16	12	09	22	16	12	09	15	12	09
10	21	15	11	08	20	14	11	08	14	10	08

**Candlepower  
Distribution**



**Average Luminance  
in Footlamberts**

Vertical Angles	Average Brightness	
	Norm	Para
45°	2290	758
55°	2279	635
65°	2241	581
75°	2114	474
85°	1810	187

Lumin. Effi.	Spacing Cross	Maint. Factor
44.9%	2.6	85%

**Options**

**Antimicrobial:** Agion™ Antimicrobial protection using silver technology inhibits bacterial colonization on metal interior and exterior surfaces. Agion™ antimicrobial FDA recognized and EPA registered, meeting all applicable EPA standards.



.125 Prismatic Acrylic  
Lens Standard