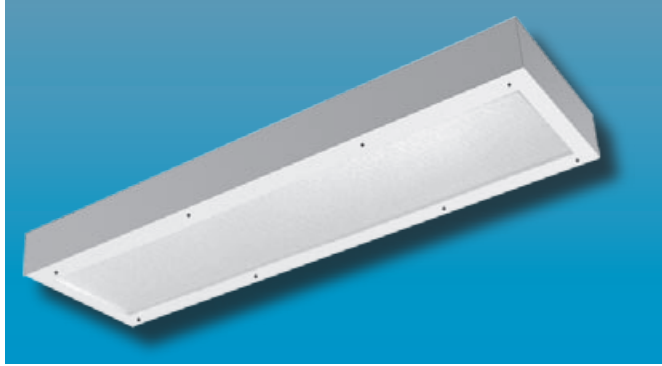


MED-SDPH15 SERIES

MEDIUM SECURITY 15" WIDE
SURFACE MOUNTED TROFFER



MEDIUM SECURITY

Specifier's Reference

Project Name	Type
Catalog No.	
Comments	

- **Listings/Certifications:** ETL (US/Canada) listing

Specifications

- **Housing:** 16 gauge, one-piece die-formed welded housing. Optional stainless steel housing available.
- **Door:** 16 gauge one-piece die-formed cold rolled steel Available in brushed stainless steel as option.
- **Lens:** Standard .125" thick clear prismatic acrylic with clear polycarbonate overlay. Optional lensing shown below.
- **Lens Retention:** Vertically adjustable "Z" shaped retaining angles secured with through studs and die-cast locknuts.
- **Hinge:** 14 gauge 1/4" diameter knuckle, continuous piano hinge with welded pin ends. Hinge welded to housing and door.
- **Fasteners:** Fully recessed, captive, center pin reject Allen head standard.
- **Lamps:** See below for lamping options. Lamps supplied by others.
- **Ballasts:** Standard Class P, sound rated A electronic ballasts. Other ballast options available.
- **Finish:** Standard baked white polyester powder coat paint finish. Optional AgION™ antimicrobial finish available.
- **Mounting:** Standard 5/16" diameter mounting holes (4) for surface mounting. Hardware and support above plenum by others.

Ordering Information

Example: **MED - SDPH15 - 4 - 6 - T5 - EB10IS - 3/A - SS - UNV**

Series	Length	No. Lamps	Lamp Type	Ballast Type	Lens Type	Fasteners	Options	Voltage
MED-SDPH15								
	-4 Nominal 4' Unit	-4 Four Lamps	-BX 2' 40W -T8 4' 32W 2' 17W	-EB10IS Electronic Ballast <10% THD Instant Start -SB Specified Ballast	ENVIRONMENT SIDE -3 .250" Clear Polycarbonate (standard) -7 .250" Clear Tempered Glass LAMP SIDE -A .125 Prismatic Acrylic -C .140 DR Prismatic Acrylic -G .156 Prismatic Tempered Glass -UV .007 UV Absorbing Overlay	-F1 Allen Head - center pin reject, standard -SF Specified Fastener	-EMG1 1-Lamp Emergency Power Pak 500 Lumen initial output, 90 minute, 32° start temp. -EMG2 2-Lamp Emergency Power Pak 1100 Lumen initial output, 90 minute, 32° start temp. -SS Stainless Steel Housing, Brushed Stainless Steel Door -AG AgION™ Antimicrobial Protection in Powder Coat Paint -PL7 7W PL Nightlight -GLR GLR/HLR Fuse & Holder set -SSD Stainless Steel Door Painted	-UNV -347V

Note: Contact Factory For Additional Configurations.

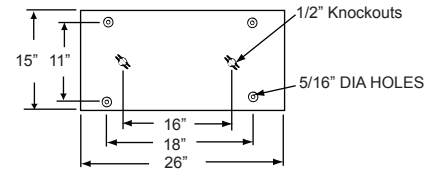
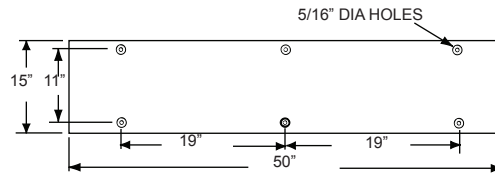
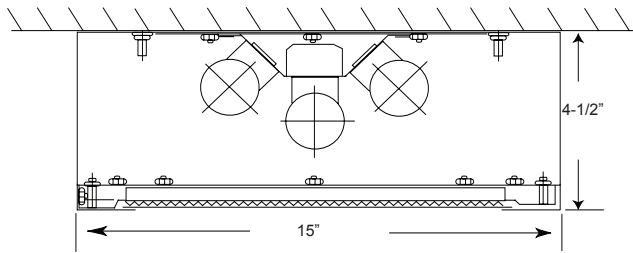
MED-SDPH15 SERIES

MEDIUM SECURITY 15" WIDE
SURFACE MOUNTED TROFFER

Morlite

TOUGH SITES TOUGH LITES

Dimensions & Mounting



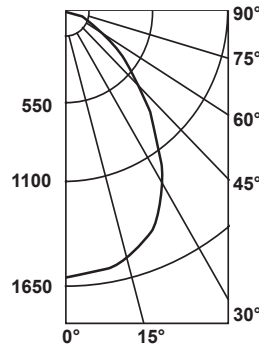
Photometry

Candlepower Distribution

Zonal Cavity Coefficient of Utilization

I.T.L. Test No. ITL 37569, Product Catalog Number:
MED-SDPH15-4-F-4-T8-EB10IS-4/A-SSD-F1-UNV
Lamps: Four 32WT8, each rated 3150

Floor Ceilings Walls(%)	80%				20% 70%				50%			
	70	50	30	10	70	50	30	10	50	30	10	
0	68	68	68	68	67	67	67	67	64	64	64	
1	64	62	60	58	62	60	59	57	58	57	55	
2	59	55	52	50	58	54	51	49	52	50	48	
3	55	50	46	43	54	49	45	43	47	44	42	
4	51	45	41	37	50	44	40	37	43	39	37	
5	47	40	36	32	46	40	35	32	39	35	32	
6	43	37	32	29	42	36	32	29	35	31	28	
7	40	33	28	25	29	33	28	25	32	28	25	
8	37	30	25	22	26	29	25	22	29	25	22	
9	34	27	22	19	23	26	22	19	26	22	19	
10	32	24	20	17	21	24	20	17	23	20	17	



Average Luminance in Footlamberts

Vertical Angles	Average Brightness	
	Norm	Para
45°	1287	1207
55°	955	930
65°	611	639
75°	431	454
85°	201	201

Lumin. Effi.	Spacing Cross	Maint. Factor
57.4%	1.3	85%

Options

Antimicrobial: Agion™ Antimicrobial protection using silver technology inhibits bacterial colonization on metal interior and exterior surfaces. Agion™ antimicrobial FDA recognized and EPA registered, meeting all applicable EPA standards.



.125 Prismatic Acrylic
Lens Standard

Morlite

a Genlyte company