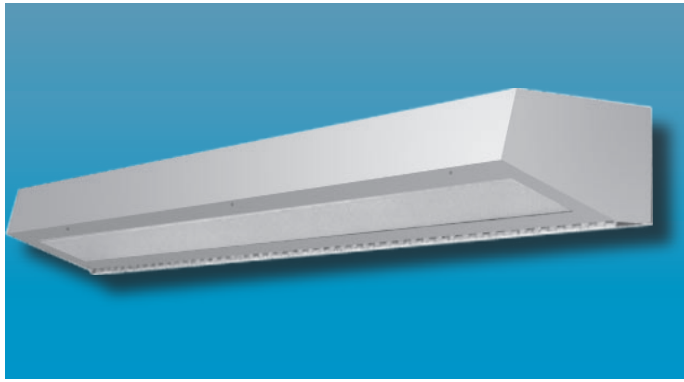


# MAX-R15 SERIES

MAXIMUM SECURITY WALL MOUNTED



# MAXIMUM SECURITY

## Specifier's Reference

Project Name	Type
Catalog No.	
Comments	

- **Listings/Certifications:** ETL (US/Canada), damp location listed.

## Specifications

- **Housing:** 14 gauge, die-formed welded housing. All exposed seams continuous welded. Optional stainless steel housing available.
- **Door:** One-piece die-formed cold rolled steel. Available in brushed stainless steel as option.
- **Lens:** Standard .125" thick clear prismatic acrylic with clear polycarbonate overlay. Optional lensing shown below.
- **Lens Retention:** Vertically adjustable "Z" shaped retaining angles secured with through studs and die-cast locknuts.
- **Hinge:** 16 gauge 1/4" diameter knuckle, continuous piano hinge with welded pin ends. Hinge welded to housing and door.
- **Fasteners:** Captive center pin reject Allen head standard.
- **Lamps:** See below for lamping options. Lamps supplied by others.
- **Ballasts:** Standard Class P, sound rated A electronic ballasts. Other ballast options available.
- **Finish:** Standard baked white polyester powder coat paint finish. Optional AgION™ antimicrobial finish available.

## Ordering Information

Example: **MAX - R15 - 4 - 3 - T5 - EB10IS - 8/A - SS - UNV**

Series	Length	Number Lamps	Lamp Type	Ballast Type	Lens Type	Fasteners	Options	Voltage
<b>MAX-R15</b>	- [ ] -	- [ ] -	- [ ] -	- [ ] -	- [ ] -	- [ ] -	- [ ] -	- [ ] -
	<b>-2</b> Nominal 2' Unit	<b>-2</b> Two Lamps	<b>-BX</b> 40W Biax (2' Unit Only)	<b>-EB10IS</b> Electronic Ballast <10% THD Instant Start	<b>ENVIRONMENT</b> <b>-4</b> .375 Clear Polycarbonate (standard)	<b>-F1</b> Allen Head - center pin reject, standard	<b>-SS</b> Stainless Steel Hous- ing, Brushed Stain- less Steel Door	<b>-UNV</b> <b>-347V</b>
	<b>-4</b> Nominal 4' Unit	<b>-1</b> One Lamp	<b>-T8</b> 4' 32W 2' 17W	<b>-SB</b> Specified Ballast	<b>-8</b> .375" Clear Tempered Glass	<b>-SF</b> Specified Fastener	<b>-AG</b> AgION™ Antimicro- bial Protection in Powder Coat Paint	
			<b>-T5</b> 4' 28W 2' 14W		<b>LAMP SIDE</b> <b>-A</b> .125 Prismatic Polycarbonate		<b>-GLR</b> GLR/HLR Fuse & Holder set	
			<b>-T5HO</b> 4' 54W 2' 24W		<b>-C</b> .140 DR Prismatic Acrylic		<b>-WL</b> Wet Location	
					<b>-G</b> .156 Prismatic Tempered Glass		<b>-DL</b> Damp Location	
					<b>-UV</b> .007 UV Absorb- ing Overlay			

Note: Contact Factory For Additional Configurations.

**Morlite**  
TOUGH SITES ..... TOUGH LITES

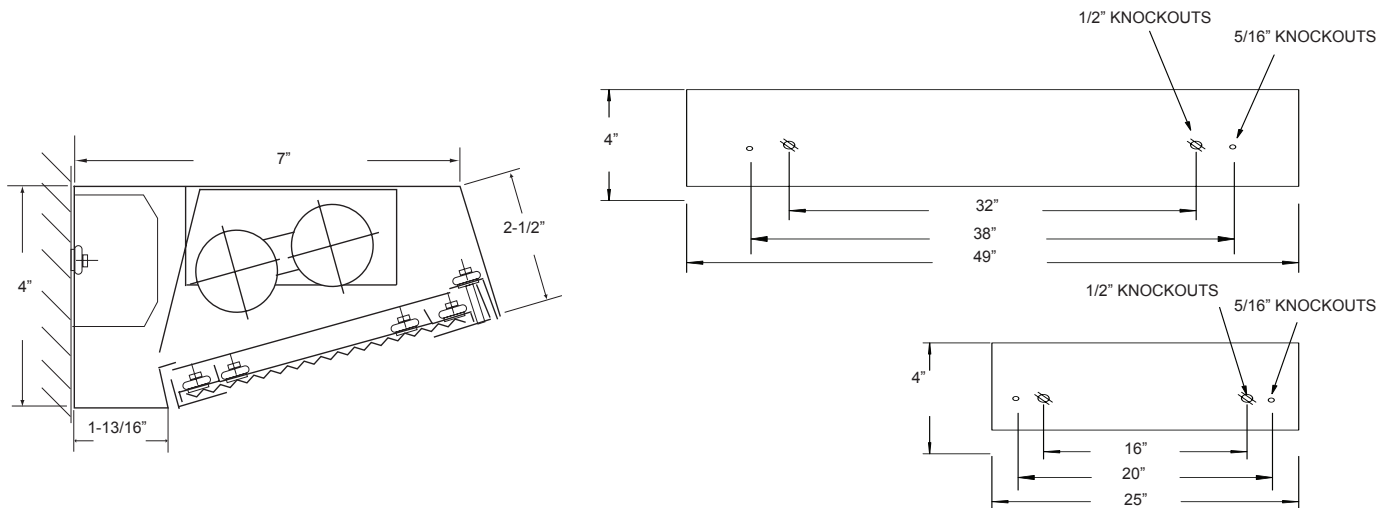
1805 Pittsburgh Ave, Erie, PA 16502 • 800-865-5954 • Fax 800-667-9959



**MAX-R15 SERIES**  
 MAXIMUM SECURITY WALL MOUNTED



**Dimensions & Mounting**



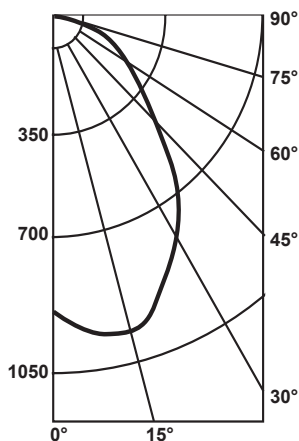
**Photometry**

**Zonal Cavity Coefficient of Utilization**

I.T.L. Test No. ITL 37587, Product Catalog Number:  
 MAX-R15-4-2-T8-EB10IS-8/A-SS-UNV  
 Lamps: Two 32WT8, each rated 3150

Floor Ceilings Walls(%)	80%				20% 70%				50%			
	70	50	30	10	70	50	30	10	50	30	10	
0	38	38	38	38	37	37	37	37	35	35	35	
1	35	34	33	32	34	33	32	31	32	31	30	
2	32	30	28	27	32	30	28	27	29	27	26	
3	30	27	25	23	29	27	25	23	26	24	23	
4	28	24	22	20	27	24	22	20	23	21	20	
5	26	22	19	17	25	22	19	17	21	19	17	
6	24	20	17	15	23	20	17	15	19	17	15	
7	22	18	15	14	21	18	15	13	17	15	13	
8	20	16	14	12	20	16	14	12	16	13	12	
9	19	15	12	10	18	14	12	10	14	12	10	
10	17	13	11	09	17	13	11	09	13	11	09	

**Candlepower  
Distribution**



**Average Luminance  
in Footlamberts**

Vertical Angles	Average Brightness	
	Norm	Para
45°	2611	2036
55°	2127	1414
65°	1525	960
75°	1021	753
85°	838	400

Lumin. Effi.	Spacing Cross	Maint. Factor
31.7%	1.5	85%

**Options**

**Antimicrobial:** Agion™ Antimicrobial protection using silver technology inhibits bacterial colonization on metal interior and exterior surfaces. Agion™ antimicrobial FDA recognized and EPA registered, meeting all applicable EPA standards.



.125 Prismatic Acrylic  
Lens Standard

