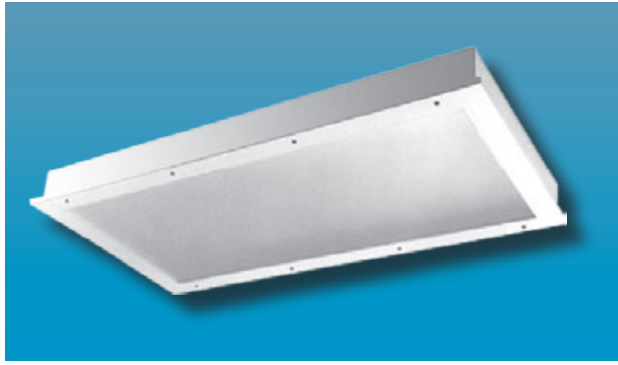


# MAX-FDPH SERIES

14GA RECESSED FLANGE WITH DROP HINGE DOOR



# MAXIMUM SECURITY

## Specifier's Reference

<b>Project Name</b>	<b>Type</b>
<b>Catalog No.</b>	
<b>Comments</b>	

- **Listings/Certifications:** ETL(US/Canada). Wet location listing

## Specifications

- **Housing:** 14-gauge cold rolled steel housing with lapped and welded seams.
- **Door:** 14-gauge cold rolled steel drop hinged door with mitered corners and closed cell gasket.
- **Lens:** .375" thick clear polycarbonate standard. Optional lensing shown below.
- **Gasket:** 4lb density polyester foam standard. Closed cell available with -WL Wet Location option.
- **Lamps:** See below for lamping options. Lamps supplied by others.
- **Lens Retention:** Full length, vertically adjustable "Z" shaped retaining angles secured by through studs and die cast locknuts.
- **Ballasts:** Standard universal voltage 120V through 277V electronic 90% power factor <10% THD. Other ballast options available.
- **Finish:** Standard baked white polyester powder coat paint finish. Optional AgION™ antimicrobial finish available.
- **Mounting:** Standard mounting hardware, 14-Ga galvanized steel "U" channel mount, accommodates various ceiling types & thicknesses. Optional plaster frame also available.

## Ordering Information

Example: **MAX - FDPH - 24 - F - 4 - T5 - EB10IS - 8/A - SSD - F1 - UNV**

Series	Size	No. Lamps	Lamp Type	Ballast Type	Lens Type	Fasteners	Options	Voltage
<b>MAX-FDPH</b>	<input type="text"/>	<input type="text"/>	<input type="text"/>	<input type="text"/>	<input type="text"/>	<input type="text"/>	<input type="text"/>	<input type="text"/>
	<b>-24</b> 2 X 4 Unit	<b>-4</b> Four Lamps	<b>-T8</b> 32W (2X4) 17W (2X2) 32W (1X4)	<b>-EB10IS</b> Electronic Ballast <10% THD Instant Start	<b>ENVIRONMENT</b> <b>-4</b> .375 Clear Polycarbonate (standard)	<b>-F1</b> Allen Head - center pin reject, standard	<b>-EMG1</b> 1-Lamp Emergency Power Pak 500 Lumen initial output, 90 minute, 32° start temp.	<b>-UNV</b> (120V- 277V) <b>-347V</b>
	<b>-22</b> 2 X 2 Unit	or 2X2 only)	<b>-T5</b> 28W (2X4) 14W (2X2)	<b>-SB</b> Specified Ballast	<b>-8</b> .375 Clear Tempered Glass	<b>-SF</b> Specified Fastener	<b>-EMG2</b> 2-Lamp Emergency Power Pak 1100 Lumen initial output, 90 minute, 32° start temp.	
	<b>-14</b> 1 X 4 Unit	Three Lamps	<b>-T5HO</b> 54W (2X4) 24W (2X2) 54W (1X4)		<b>LAMP SIDE</b> <b>-A</b> .125 Prismatic Acrylic		<b>-SSD</b> Stainless Steel Door, CRS Housing	
		<b>-2</b> Two Lamps			<b>-C</b> .140 DR Prismatic Acrylic		<b>-SDP</b> Stainless Steel Door Painted, CRS Housing	
					<b>-G</b> .156 Prismatic Tempered Glass		<b>-SS</b> Stainless Steel Door & Housing	
					<b>-UV</b> .007 UV Absorbing Overlay		<b>-AG</b> AgION™ Antimicrobial Protection in Powder Coat Paint	
							<b>-PF</b> Plaster Frame	
							<b>-GLR</b> GLR/HLR Fuse & Holder set	
							<b>-PL7</b> 7W PL Nightlight	
							<b>-WL</b> Wet Location	
							<b>-DL</b> Damp Location	

Note: Contact Factory For Additional Configurations.

**Morlite**  
TOUGH SITES ..... TOUGH LITES

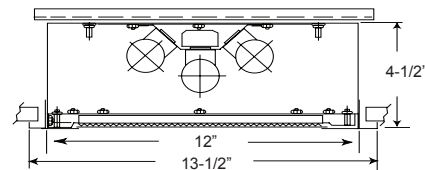
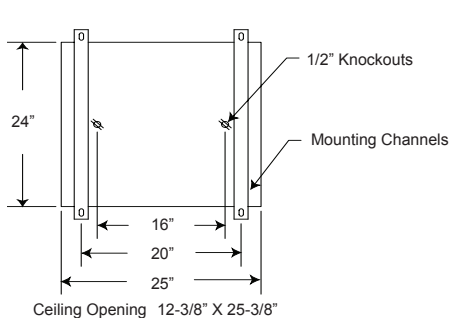
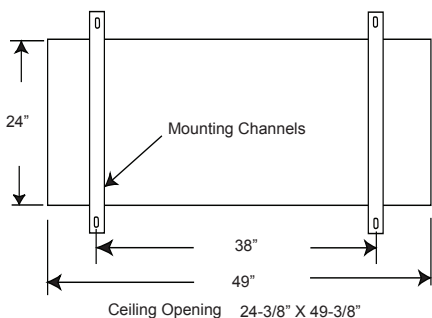
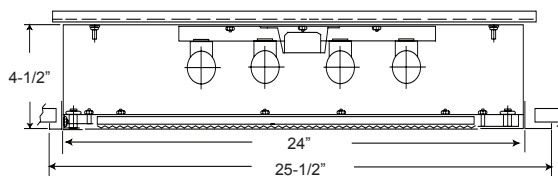
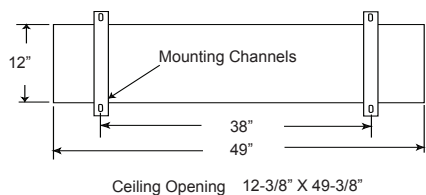
1805 Pittsburgh Ave, Erie, PA 16502 • 800-865-5954 • Fax 800-667-9959



**MAX-FDPH SERIES**  
 MAXIMUM SECURITY RECESSED FLANGE  
 WITH DROP HINGE DOOR



**Dimensions & Mounting**

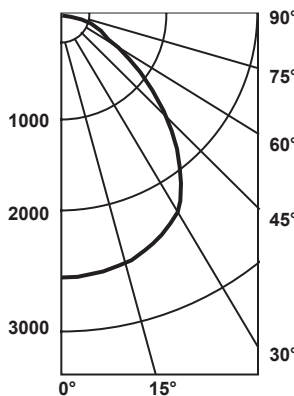


**Photometry**

**Zonal Cavity Coefficient of Utilization**  
 I.T.L. Test No. ITL 37545, Product Catalog Number:  
 MAX-FDPH-24-F-4-T8-EB10IS-4/A-SSD-F1-UNV  
 Lamps: Four 32WT8, each rated 3150

Floor Ceilings Walls(%)	80%				20% 70%				50%			
	70	50	30	10	70	50	30	10	50	30	10	
0	67	67	67	67	66	66	66	66	63	63	63	
1	63	61	59	57	61	59	57	56	57	55	54	
2	58	54	51	48	57	53	50	48	51	49	47	
3	54	49	45	42	53	48	44	41	46	43	41	
4	50	44	40	36	49	43	39	36	42	38	36	
5	46	39	35	31	45	43	34	31	38	34	31	
6	42	36	31	28	41	35	31	28	34	30	27	
7	39	32	27	24	38	32	27	24	31	27	24	
8	36	29	24	21	35	28	24	21	28	24	21	
9	33	26	21	18	32	26	21	18	25	21	18	
10	31	24	19	16	30	23	19	16	23	19	16	

**Candlepower  
Distribution**



**Average Luminance  
in Footlamberts**

Vertical Angles	Average Brightness	
	Norm	Para
45°	1369	1174
55°	1085	924
65°	664	646
75°	490	475
85°	309	309

Lumin. Effi.	Spacing Cross	Maint. Factor
56.6%	1.3	85%

**Options**

**Antimicrobial:** Agion™ Antimicrobial protection using silver technology inhibits bacterial colonization on metal interior and exterior surfaces. Agion™ antimicrobial FDA recognized and EPA registered, meeting all applicable EPA standards.



.125 Prismatic Acrylic  
Lens Standard