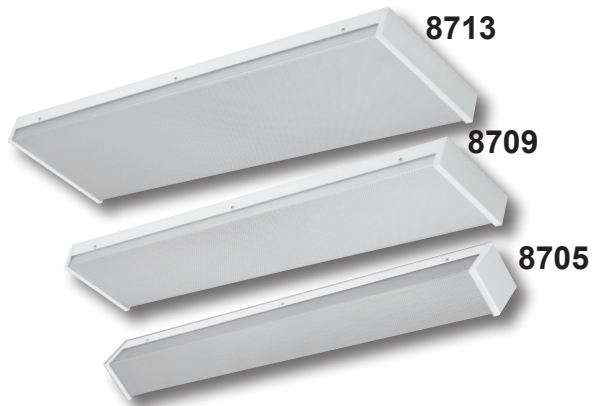


8700 SERIES

SURFACE MOUNTED LINEAR FLUORESCENT

Morlite

TOUGH SITES TOUGH LITES



Specifier's Reference	
Project	Type
Catalog No.	
Comments	

Specifications

- **Housing:** One-piece 16-gauge CRS, spot welded reinforced construction. Welded at stress points.
- **Lens:** Standard .187" formed clear prismatic polycarbonate, pattern #12. Optional .156" lens available.
- **Fasteners:** Lens secured to housing with stainless steel center pin reject Allen head fasteners. Optional fasteners are available.
- **Lamps:** See ordering information for various lamping options. Lamps are supplied by others.
- **Ballasts:** Standard Class P sound rated A electronic ballasts. Other ballast options available.
- **Finish:** Standard baked white polyester powder coat paint finish. Gloss 85%, reflectance 94%, salt spray 1,000 hours.
- **Listings/Certifications:** ETL (US/Canada) Wet Location listing IBEW Union - Made in the USA.

Ordering Information

Example: 8705 - 4 - 232 - EB - UNV - F - F1

Series	No. Lamps	Ballast Type	Lens Type	No. of Ballast	Size	Lamp Type	Voltage	Fasteners	Options
8705 - Nominal 5" Wide Unit	1 - One Lamp (8705 only)	EB - Electronic Ballast SB - Specified Ballast	F - .187 Prismatic Polycarbonate standard H - .156 Prismatic Polycarbonate	1/2 - One 2 lamp ballast 1/3 - One 3 lamp ballast 1/4 - One 4 lamp ballast 2/1 - Two 1 lamp ballast 2/2 - Two 2 lamp ballast 1/21 - One 2 lamp ballast & one 1 lamp ballast	2 - 2' Unit 4 - 4' Unit	17 - 17wT8 (24") 32 - 32wT8 (48") 14 - 14wT5 (24") 28 - 28wT5 (48") 24HO - 24wT5HO (24") 54HO - 54wT5HO (48")	UNV - 120-277V 347 - 347V	F1 - Allen Head Center Pin Reject, standard F2 - TORX Head Center Pin Reject SF - Specified fastener	EMG1* - Emergency Ballast (390-700 lumens, 4' only) EMG2* - Emergency Ballast (600-1325 lumens, 4' only) NLF* - 7W PL night light (4' only) NLED - LED Nightlight GLR - GLR Fusing

* Specify voltage



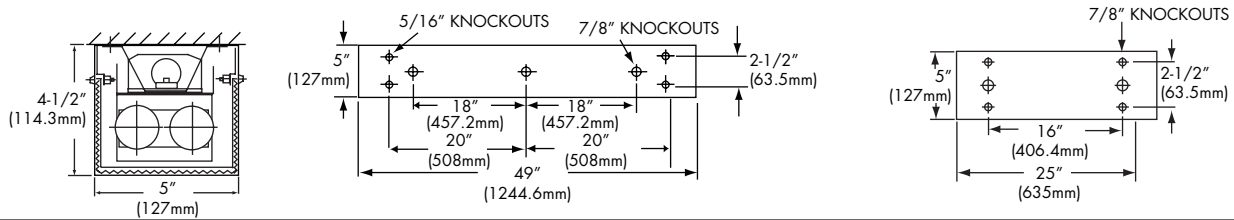
8700 SERIES

SURFACE MOUNTED LINEAR FLUORESCENT

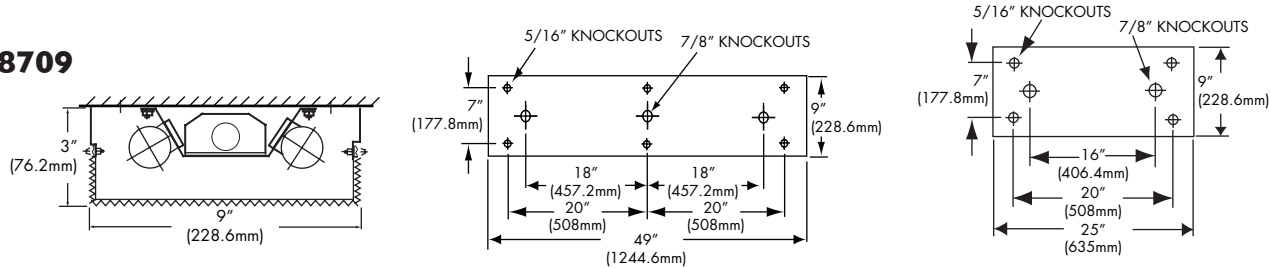


Dimensions & Mounting

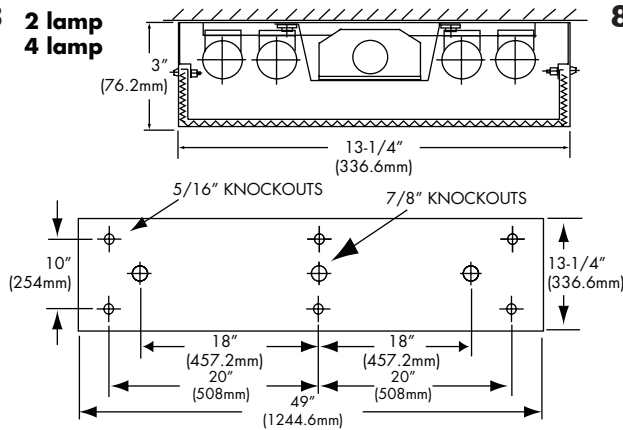
8705



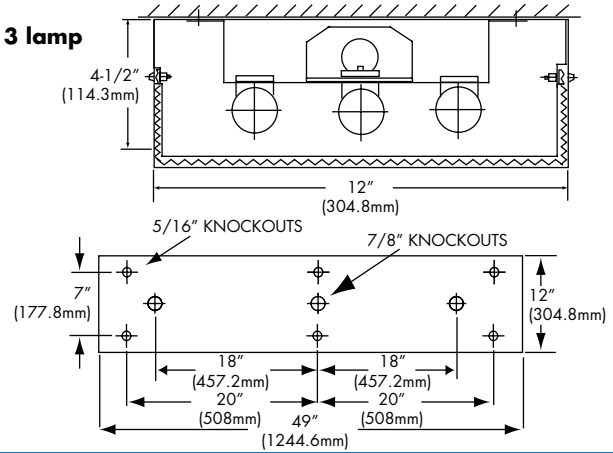
8709



8713 2 lamp 4 lamp



8713 3 lamp



Photometry

RC	80				70				50			
	RW	70	50	30	10	70	50	30	10	50	30	10
R 0	68	68	68	68	65	65	65	59	59	59	50	
C 1	60	57	54	51	57	54	51	49	49	47	45	
R 2	54	49	44	41	51	47	42	39	42	39	35	
3	50	43	38	34	47	41	36	33	37	33	30	
4	45	38	33	29	43	36	32	28	33	29	26	
5	42	34	28	24	39	32	27	24	30	25	22	
6	38	30	25	21	36	29	24	21	27	22	19	
7	35	27	22	19	34	26	21	18	24	20	17	
8	33	25	20	16	31	24	19	16	22	16	13	
9	30	22	17	14	29	21	17	14	20	16	13	
0	28	20	16	12	27	20	15	12	18	14	11	

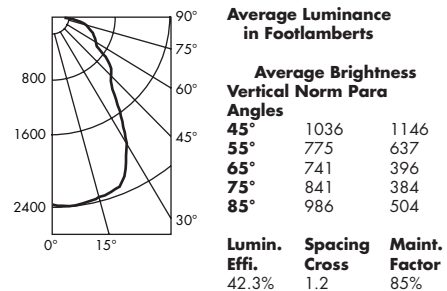
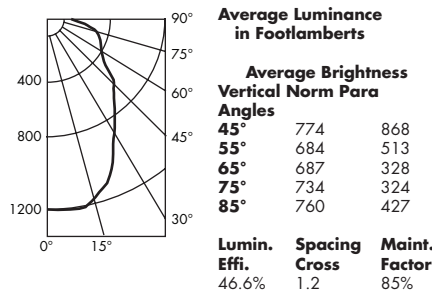
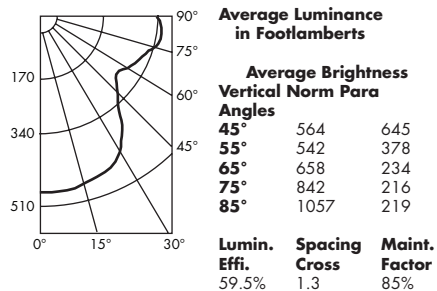
RC	80				70				50			
	RW	70	50	30	10	70	50	30	10	50	30	10
R 0	55	55	55	55	53	53	53	53	50	50	50	
C 1	50	48	46	44	49	47	45	43	44	42	41	
R 2	46	42	39	37	45	41	39	36	39	37	35	
3	42	38	34	32	41	37	34	31	35	32	30	
4	39	34	30	27	38	33	30	27	32	29	26	
5	36	31	27	24	35	30	26	23	29	25	23	
6	34	28	24	21	32	27	23	21	26	23	20	
7	31	25	21	19	30	25	21	18	24	20	18	
8	29	23	19	16	28	22	19	16	21	18	16	
9	27	21	17	14	26	20	17	14	19	16	14	
0	25	19	15	13	24	18	15	13	18	15	13	

RC	80				70				50			
	RW	70	50	30	10	70	50	30	10	50	30	10
R 0	50	50	50	50	48	48	48	48	46	46	46	
C 1	46	44	43	41	45	43	42	40	41	40	39	
R 2	42	39	37	35	41	38	36	34	37	35	33	
3	39	35	32	30	38	35	32	30	33	31	29	
4	36	32	29	26	35	31	28	26	30	28	25	
5	34	29	25	23	33	28	25	23	27	24	22	
6	31	26	23	20	30	26	23	20	25	22	20	
7	29	24	21	18	28	23	20	18	23	20	18	
8	27	22	18	16	26	21	18	16	21	18	16	
9	25	20	16	14	24	19	16	14	19	16	14	
0	23	18	15	13	23	18	15	13	17	14	12	

Zonal Cavity Coefficient of Utilization 8705
I.T.L. Test No.: ITL 37519,
Product Catalog Number: 8705-4-1-T8
Lamps: One 32WT8, rated 3150 lumens.

Zonal Cavity Coefficient of Utilization 8709
I.T.L. Test No.: ITL 37521,
Product Catalog Number: 8709-4-2-T8
Lamps: Two 32WT8, rated 3150 lumens.

Zonal Cavity Coefficient of Utilization 8713
I.T.L. Test No.: ITL 37520,
Product Catalog Number: 8713-4-4-T8
Lamps: Four 32WT8, rated 3150 lumens.



Hg Some luminaires use fluorescent or high intensity discharge (HID) lamps that contain small amounts of mercury. Such lamps are labeled "Contains Mercury" and/or the symbol "Hg." Lamps that contain mercury must be disposed of in accordance with local requirements. Information regarding lamp recycling and disposal can be found at www.lamprecycle.org.

